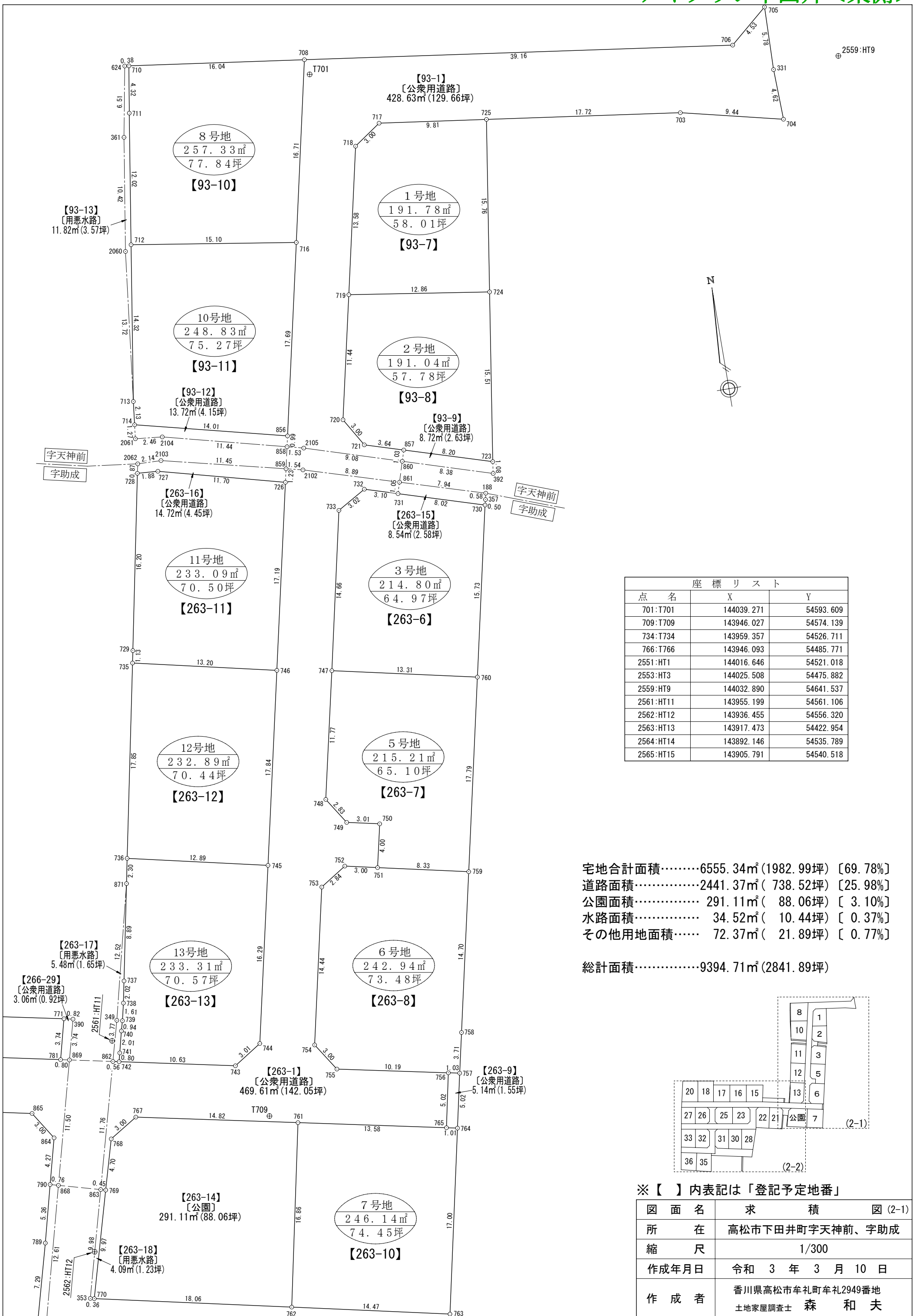


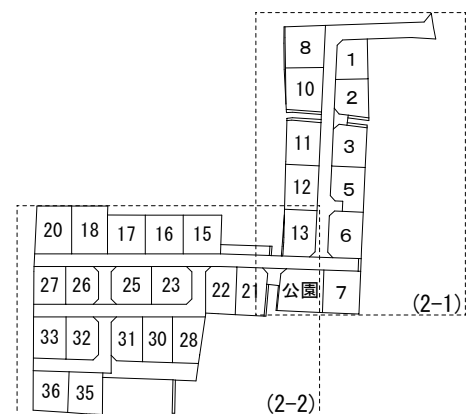
アイタウン下田井<東側>



座標リスト		
点名	X	Y
701:T701	144039.271	54593.609
709:T709	143946.027	54574.139
734:T734	143959.357	54526.711
766:T766	143946.093	54485.771
2551:HT1	144016.646	54521.018
2553:HT3	144025.508	54475.882
2559:HT9	144032.890	54641.537
2561:HT11	143955.199	54561.106
2562:HT12	143936.455	54556.320
2563:HT13	143917.473	54422.954
2564:HT14	143892.146	54535.789
2565:HT15	143905.791	54540.518

宅地合計面積……………6555.34m²(1982.99坪) [69.78%]
 道路面積……………2441.37m²(738.52坪) [25.98%]
 公園面積……………291.11m²(88.06坪) [3.10%]
 水路面積……………34.52m²(10.44坪) [0.37%]
 その他用地面積………72.37m²(21.89坪) [0.77%]

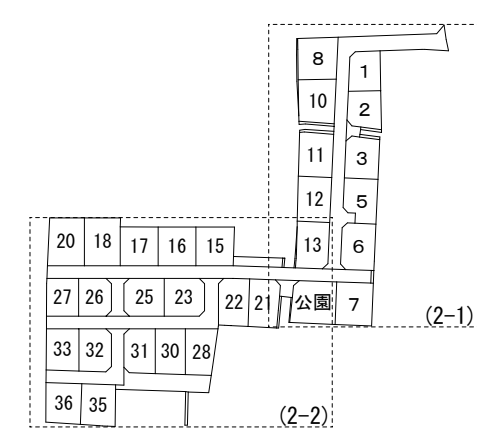
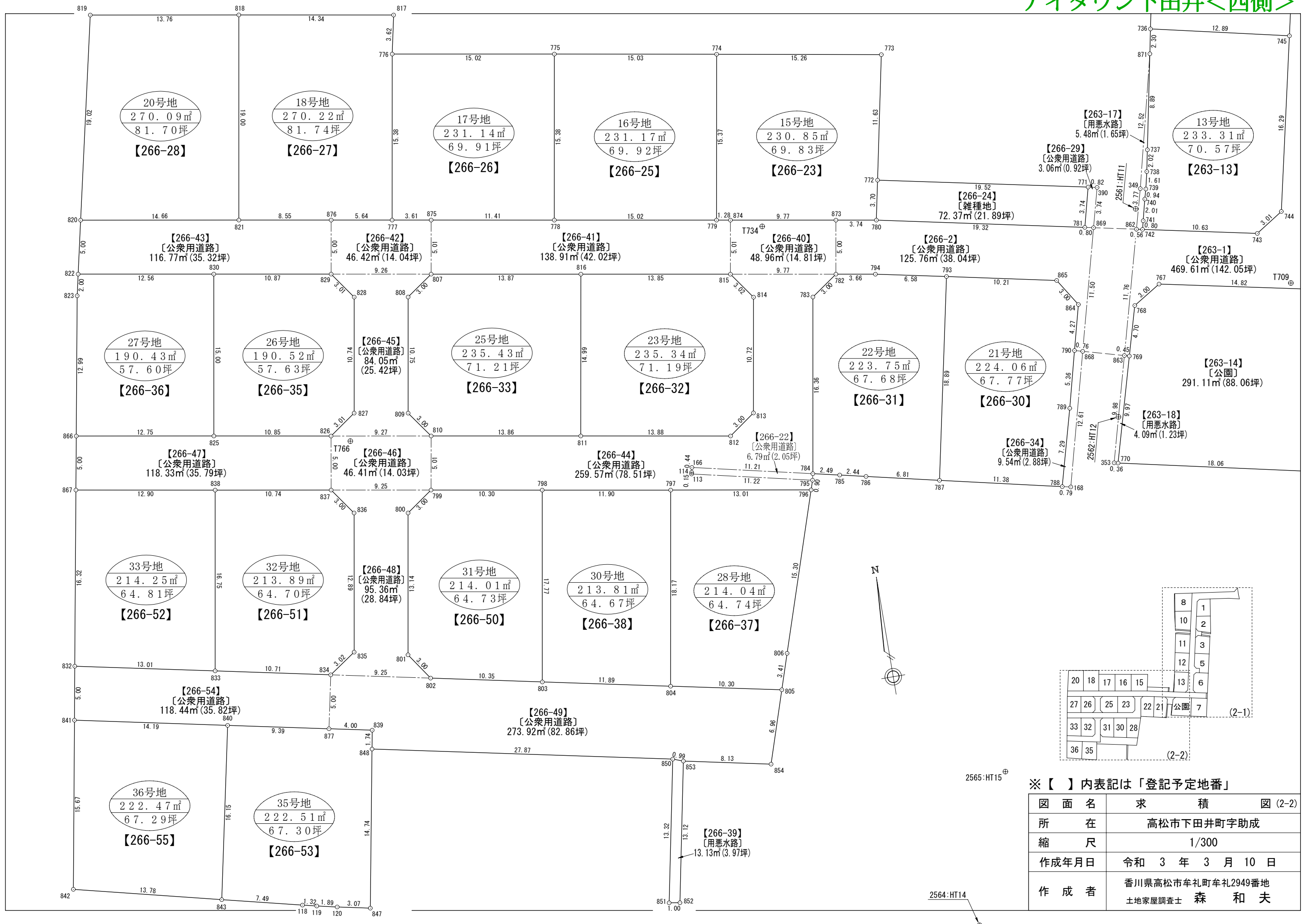
総計面積……………9394.71m²(2841.89坪)



※【 】内表記は「登記予定地番」

図面名	求積図 (2-1)
所在	高松市下田井町字天神前、字助成
縮尺	1/300
作成年月日	令和3年3月10日
作成者	香川県高松市牟礼町牟礼2949番地 土地家屋調査士 森和夫

アイタウン下田井<西側>



※【 】内表記は「登記予定地番」

図面名	求積図 (2-2)
所在	高松市下田井町字助成
縮尺	1/300
作成年月日	令和 3 年 3 月 10 日
作成者	香川県高松市牟礼町牟礼2949番地 土地家屋調査士 森 和 夫

座標求積表

Table with columns: 地番, 点番, X, Y, 辺長, 測線. Contains data for plots 1, 2, 3, 5, 6, 7, and 8.

*公 式 A=1/2Σ(X2-X1)(Y1+Y2)

座標求積表

Table with columns: 地番, 点番, X, Y, 辺長, 測線. Contains data for plots 10, 11, 12, 13, 15, 16, and 17.

*公 式 A=1/2Σ(X2-X1)(Y1+Y2)

座標求積表

Table with columns: 地番, 点番, X, Y, 辺長, 測線. Contains data for plots 18, 20, 21, 22, 23, and 25.

*公 式 A=1/2Σ(X2-X1)(Y1+Y2)

※【 】内表記は「登記予定地番」

Table with columns: 図面名, 所在, 作成年月日, 作成者. Content includes '高松市下田井町字天神前、字助成' and '香川県高松市牟礼町牟礼2949番地'.

座標求積表

Table with columns: 地番, 点番, X, Y, 辺長, 測線. Includes multiple land parcels (e.g., 26号地, 27号地, 28号地, 30号地, 31号地, 32号地, 33号地) with their respective coordinates and area calculations.

*公 式 A=1/2Σ(X2-X1)(Y1+Y2)

座標求積表

Table with columns: 地番, 点番, X, Y, 辺長, 測線. Includes land parcels 35号地 and 36号地 with their respective coordinates and area calculations.

*公 式 A=1/2Σ(X2-X1)(Y1+Y2)

座標求積表

Table with columns: 地番, 点番, X, Y, 辺長, 測線. Includes land parcels 93-1 and 93-9 with their respective coordinates and area calculations.

*公 式 A=1/2Σ(X2-X1)(Y1+Y2)

Table with columns: 地番, 点番, X, Y, 辺長, 測線. Includes land parcels 93-12 and 93-13 with their respective coordinates and area calculations.

*公 式 A=1/2Σ(X2-X1)(Y1+Y2)

座標求積表

Table with columns: 地番, 点番, X, Y, 辺長, 測線. Includes land parcels 263-1 and 263-9 with their respective coordinates and area calculations.

*公 式 A=1/2Σ(X2-X1)(Y1+Y2)

Table with columns: 地番, 点番, X, Y, 辺長, 測線. Includes land parcels 263-14 and 263-15 with their respective coordinates and area calculations.

*公 式 A=1/2Σ(X2-X1)(Y1+Y2)

※【 】内表記は「登記予定地番」

Table with 2 columns: 図面名, 座標求積表(3-2); 所在, 高松市下田井町字天神前、字助成; 作成年月日, 令和3年3月10日; 作成者, 香川県高松市牟礼町牟礼2949番地 土地家屋調査士 森和夫

座標求積表

Table with 6 columns: 地番, 点番, X, Y, 辺長, 測線. Data for [263-16] (public road) including area calculations (倍面積, 面積, 坪数) and ground area (地積).

Table with 6 columns: 地番, 点番, X, Y, 辺長, 測線. Data for [263-17] (water use road) including area calculations and ground area.

Table with 6 columns: 地番, 点番, X, Y, 辺長, 測線. Data for [263-18] (water use road) including area calculations and ground area.

Table with 6 columns: 地番, 点番, X, Y, 辺長, 測線. Data for [266-2] (public road) including area calculations and ground area.

Table with 6 columns: 地番, 点番, X, Y, 辺長, 測線. Data for [266-24] (miscellaneous land) including area calculations and ground area.

Table with 6 columns: 地番, 点番, X, Y, 辺長, 測線. Data for [266-29] (public road) including area calculations and ground area.

Table with 6 columns: 地番, 点番, X, Y, 辺長, 測線. Data for [266-34] (public road) including area calculations and ground area.

*公式 A=1/2Σ(X2-X1)(Y1+Y2)

座標求積表

Table with 6 columns: 地番, 点番, X, Y, 辺長, 測線. Data for [266-39] (water use road) including area calculations and ground area.

Table with 6 columns: 地番, 点番, X, Y, 辺長, 測線. Data for [266-40] (public road) including area calculations and ground area.

Table with 6 columns: 地番, 点番, X, Y, 辺長, 測線. Data for [266-41] (public road) including area calculations and ground area.

Table with 6 columns: 地番, 点番, X, Y, 辺長, 測線. Data for [266-42] (public road) including area calculations and ground area.

Table with 6 columns: 地番, 点番, X, Y, 辺長, 測線. Data for [266-43] (public road) including area calculations and ground area.

Table with 6 columns: 地番, 点番, X, Y, 辺長, 測線. Data for [266-44] (public road) including area calculations and ground area.

*公式 A=1/2Σ(X2-X1)(Y1+Y2)

座標求積表

Table with 6 columns: 地番, 点番, X, Y, 辺長, 測線. Data for [266-45] (public road) including area calculations and ground area.

Table with 6 columns: 地番, 点番, X, Y, 辺長, 測線. Data for [266-46] (public road) including area calculations and ground area.

Table with 6 columns: 地番, 点番, X, Y, 辺長, 測線. Data for [266-47] (public road) including area calculations and ground area.

Table with 6 columns: 地番, 点番, X, Y, 辺長, 測線. Data for [266-48] (public road) including area calculations and ground area.

Table with 6 columns: 地番, 点番, X, Y, 辺長, 測線. Data for [266-49] (public road) including area calculations and ground area.

Table with 6 columns: 地番, 点番, X, Y, 辺長, 測線. Data for [266-54] (public road) including area calculations and ground area.

*公式 A=1/2Σ(X2-X1)(Y1+Y2)

※【 】内表記は「登記予定地番」

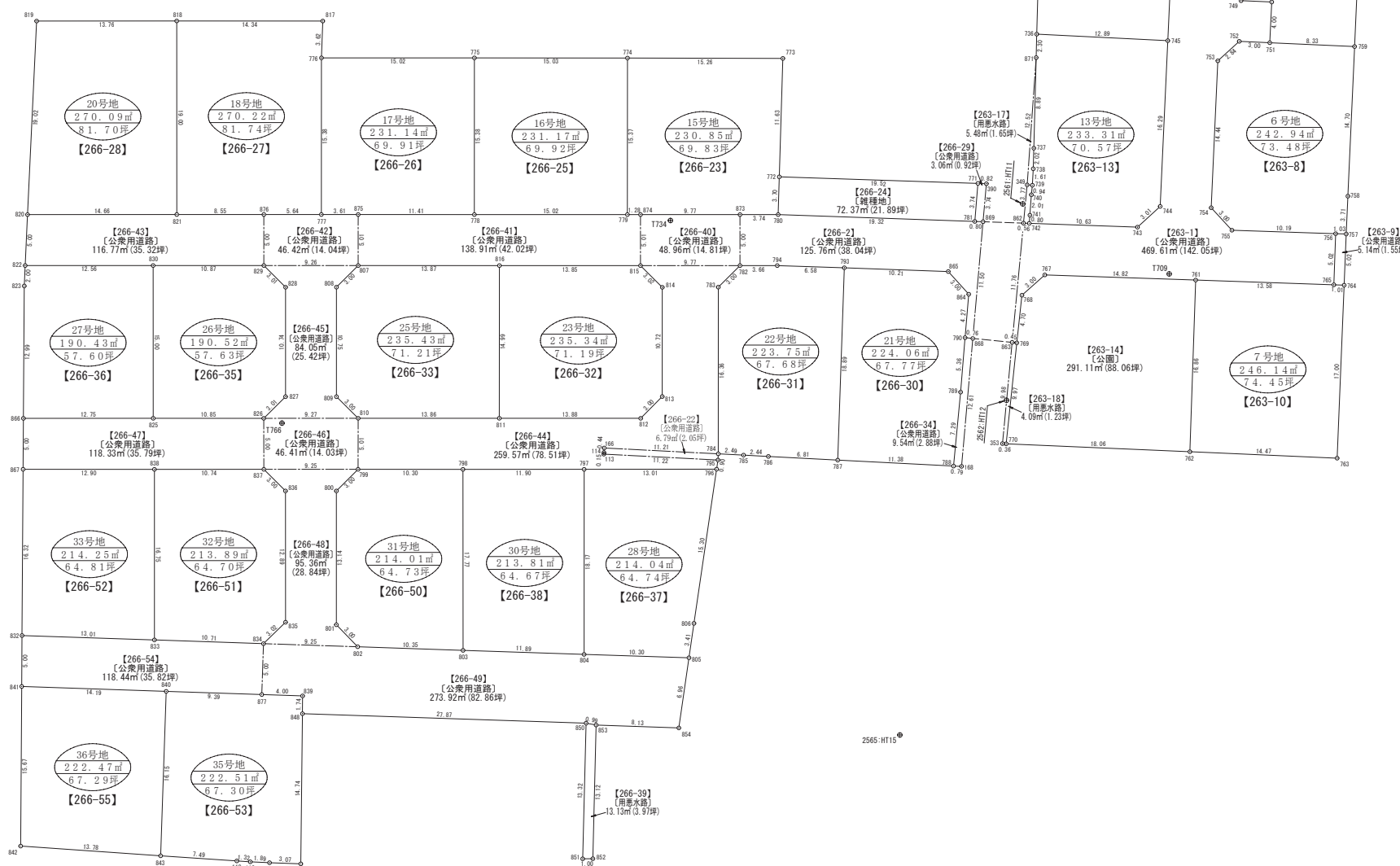
Table with 2 columns: 図面名, 所在, 作成年月日, 作成者. Content includes '高松市下田井町字天神前、字助成', '令和 3 年 3 月 10 日', and '香川県高松市牟礼町牟礼2949番地 土地家屋調査士 森 和 夫'.

アイタウン下田井 全体図

宅地合計面積.....6555.34㎡(1982.99坪) [69.78%]
 道路面積.....2441.37㎡(738.52坪) [25.98%]
 公園面積.....291.11㎡(88.06坪) [3.10%]
 水路面積.....34.52㎡(10.44坪) [0.37%]
 その他用地面積.....72.37㎡(21.89坪) [0.77%]
 総計面積.....9394.71㎡(2841.89坪)

2553-HT3

2551-HT1



座標リスト		
点名	X	Y
701-T701	144039.271	54593.609
709-T709	143946.027	54574.139
734-T734	143959.357	54526.711
766-T766	143946.093	54485.771
2551-HT1	144018.646	54521.018
2553-HT3	144025.508	54475.882
2559-HT9	144032.890	54641.537
2561-HT11	143955.199	54561.106
2562-HT12	143936.455	54556.320
2563-HT13	143917.473	54422.954
2564-HT14	143892.146	54535.789
2565-HT15	143905.791	54540.518

2563-HT13

2565-HT15

2564-HT14

※【 】内表記は「登記予定地番」

図面名	確定測量図
所在	高松市下田井町宇天神前、宇助成
縮尺	1/300 (A1サイズの縮尺)
作成年月日	令和3年3月10日
作成者	香川県高松市牟礼町牟礼2949番地 土地家屋調査士 森和夫