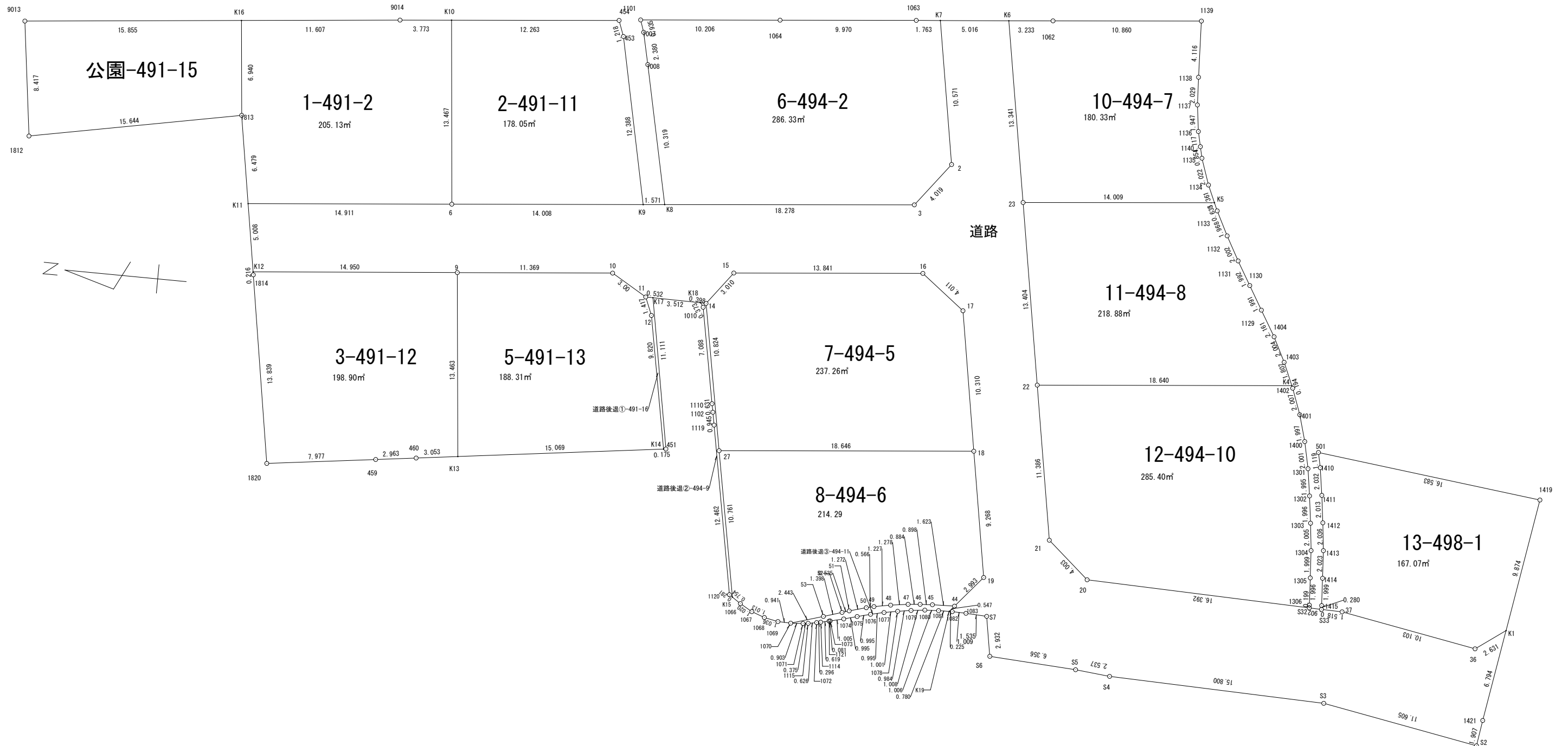


実測図 S=1:300



所在	綾川町滝宮字原井田491-2他
地番	
作製年月日	令和6年11月11日
作製者	高松市仏生山町甲2130-1 土地家屋調査士・二級建築士 岡野上竜二 宅地建物取引士

求積表

Table with 5 columns: NO, Xn, Yn, Yn+1-Yn-1, Xn * (Yn+1-Yn-1). Includes sub-header B 1-491-2 and a total row.

Table with 5 columns: NO, Xn, Yn, Yn+1-Yn-1, Xn * (Yn+1-Yn-1). Includes sub-header C 2-491-11 and a total row.

Table with 5 columns: NO, Xn, Yn, Yn+1-Yn-1, Xn * (Yn+1-Yn-1). Includes sub-header D 3-491-12 and a total row.

Table with 5 columns: NO, Xn, Yn, Yn+1-Yn-1, Xn * (Yn+1-Yn-1). Includes sub-header E 5-491-13 and a total row.

Table with 5 columns: NO, Xn, Yn, Yn+1-Yn-1, Xn * (Yn+1-Yn-1). Includes sub-header F 公園-491-15 and a total row.

Table with 5 columns: NO, Xn, Yn, Yn+1-Yn-1, Xn * (Yn+1-Yn-1). Includes sub-header G 道路後退①-491-16 and a total row.

Table with 5 columns: NO, Xn, Yn, Yn+1-Yn-1, Xn * (Yn+1-Yn-1). Includes sub-header H 6-494-2 and a total row.

Table with 5 columns: NO, Xn, Yn, Yn+1-Yn-1, Xn * (Yn+1-Yn-1). Includes sub-header I 7-494-5 and a total row.

Table with 5 columns: NO, Xn, Yn, Yn+1-Yn-1, Xn * (Yn+1-Yn-1). Includes sub-header J 8-494-6 and a total row.

Table with 5 columns: NO, Xn, Yn, Yn+1-Yn-1, Xn * (Yn+1-Yn-1). Includes sub-header K 10-494-7 and a total row.

Table with 5 columns: NO, Xn, Yn, Yn+1-Yn-1, Xn * (Yn+1-Yn-1). Includes sub-header L 11-494-8 and a total row.

Table with 5 columns: NO, Xn, Yn, Yn+1-Yn-1, Xn * (Yn+1-Yn-1). Includes sub-header M 道路後退②-494-9 and a total row.

Table with 5 columns: NO, Xn, Yn, Yn+1-Yn-1, Xn * (Yn+1-Yn-1). Includes sub-header N 12-494-10 and a total row.

Table with 5 columns: NO, Xn, Yn, Yn+1-Yn-1, Xn * (Yn+1-Yn-1). Includes sub-header O 道路後退③-494-11 and a total row.

Table with 5 columns: NO, Xn, Yn, Yn+1-Yn-1, Xn * (Yn+1-Yn-1). Includes sub-header P 13-498-1 and a total row.

Table with 5 columns: NO, Xn, Yn, Yn+1-Yn-1, Xn * (Yn+1-Yn-1). Includes sub-header A 道路 and a total row.