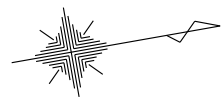
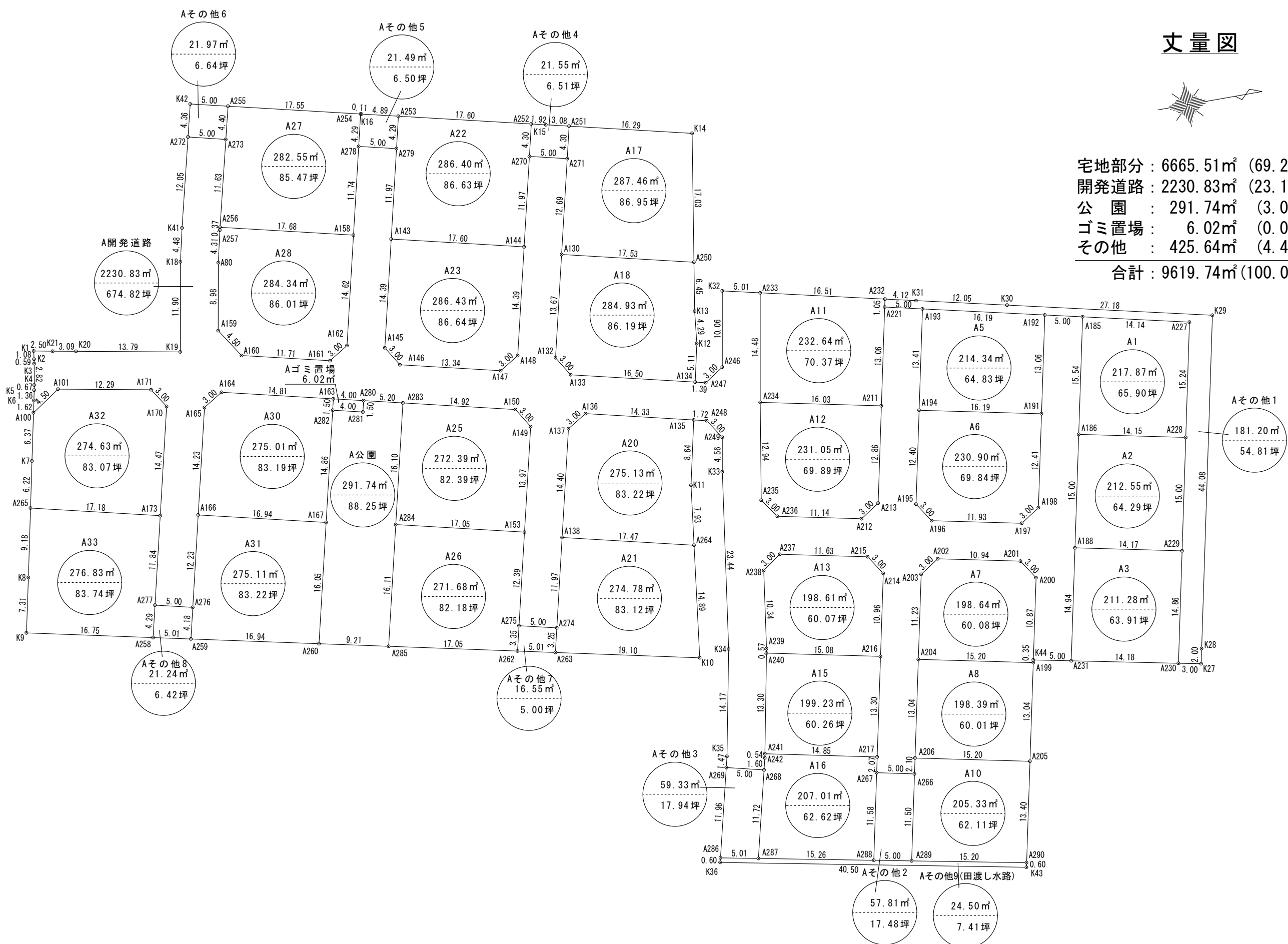


丈量図



宅地部分 : 6665.51㎡ (69.29%)
 開発道路 : 2230.83㎡ (23.19%)
 公園 : 291.74㎡ (3.03%)
 ゴミ置場 : 6.02㎡ (0.06%)
 その他 : 425.64㎡ (4.43%)
 合計 : 9619.74㎡ (100.00%)



土地の所在	高松市小村町字北下所	縮尺	1 / 500	測量年月日	令和 7年 7月23日	特記事項	作製者	石井登記測量事務所 土地家屋調査士 石井敦雄 高松市春日町 1643-9 電話 843-3131
土地の地番	306-1, 307, 308, 309, 310-3, 349-2, 350-2, 351-6及び地先農道・水路			図面番号	作製年月日			

座 標 求 積 表

Table A1: Land area calculation with columns for point number, Xn, Yn, and (Xn+1 - Xn-1)Yn. Includes sub-totals for double area, area, and land area.

Table A2: Land area calculation with columns for point number, Xn, Yn, and (Xn+1 - Xn-1)Yn. Includes sub-totals for double area, area, and land area.

Table A3: Land area calculation with columns for point number, Xn, Yn, and (Xn+1 - Xn-1)Yn. Includes sub-totals for double area, area, and land area.

Table A5: Land area calculation with columns for point number, Xn, Yn, and (Xn+1 - Xn-1)Yn. Includes sub-totals for double area, area, and land area.

Table A6: Land area calculation with columns for point number, Xn, Yn, and (Xn+1 - Xn-1)Yn. Includes sub-totals for double area, area, and land area.

Table A7: Land area calculation with columns for point number, Xn, Yn, and (Xn+1 - Xn-1)Yn. Includes sub-totals for double area, area, and land area.

Table A8: Land area calculation with columns for point number, Xn, Yn, and (Xn+1 - Xn-1)Yn. Includes sub-totals for double area, area, and land area.

Table A10: Land area calculation with columns for point number, Xn, Yn, and (Xn+1 - Xn-1)Yn. Includes sub-totals for double area, area, and land area.

Table A11: Land area calculation with columns for point number, Xn, Yn, and (Xn+1 - Xn-1)Yn. Includes sub-totals for double area, area, and land area.

Table A12: Land area calculation with columns for point number, Xn, Yn, and (Xn+1 - Xn-1)Yn. Includes sub-totals for double area, area, and land area.

Table A13: Land area calculation with columns for point number, Xn, Yn, and (Xn+1 - Xn-1)Yn. Includes sub-totals for double area, area, and land area.

Table A15: Land area calculation with columns for point number, Xn, Yn, and (Xn+1 - Xn-1)Yn. Includes sub-totals for double area, area, and land area.

Table A16: Land area calculation with columns for point number, Xn, Yn, and (Xn+1 - Xn-1)Yn. Includes sub-totals for double area, area, and land area.

Table A17: Land area calculation with columns for point number, Xn, Yn, and (Xn+1 - Xn-1)Yn. Includes sub-totals for double area, area, and land area.

Table A18: Land area calculation with columns for point number, Xn, Yn, and (Xn+1 - Xn-1)Yn. Includes sub-totals for double area, area, and land area.

Table A20: Land area calculation with columns for point number, Xn, Yn, and (Xn+1 - Xn-1)Yn. Includes sub-totals for double area, area, and land area.

Table A21: Land area calculation with columns for point number, Xn, Yn, and (Xn+1 - Xn-1)Yn. Includes sub-totals for double area, area, and land area.

Table A22: Land area calculation with columns for point number, Xn, Yn, and (Xn+1 - Xn-1)Yn. Includes sub-totals for double area, area, and land area.

Table A23: Land area calculation with columns for point number, Xn, Yn, and (Xn+1 - Xn-1)Yn. Includes sub-totals for double area, area, and land area.

Table A25: Land area calculation with columns for point number, Xn, Yn, and (Xn+1 - Xn-1)Yn. Includes sub-totals for double area, area, and land area.

Table A26: Land area calculation with columns for point number, Xn, Yn, and (Xn+1 - Xn-1)Yn. Includes sub-totals for double area, area, and land area.

Table A27: Land area calculation with columns for point number, Xn, Yn, and (Xn+1 - Xn-1)Yn. Includes sub-totals for double area, area, and land area.

Table A28: Land area calculation with columns for point number, Xn, Yn, and (Xn+1 - Xn-1)Yn. Includes sub-totals for double area, area, and land area.

Table A30: Land area calculation with columns for point number, Xn, Yn, and (Xn+1 - Xn-1)Yn. Includes sub-totals for double area, area, and land area.

Summary table with columns: 土地の所在 (高松市小村町字北下所), 縮尺 (1), 測量年月日 (令和 年 月 日), 特記事項, 土地の地番 (306-1, 307, 308, 309, 310-3, 349-2, 350-2, 351-6及び地先農道・水路), 作製年月日 (令和 8年 2月 13日), 作製者 (石井登記測量事務所), 土地家屋調査士 (石井 敦雄), 高松市春日町 1643-9 電話 843-3131

Table with 4 columns: 地番, 測点, Xn, Yn, (Xn+1 - Xn-1) Yn. Includes data for A31 and summary rows for area and volume.

Table with 4 columns: 地番, 測点, Xn, Yn, (Xn+1 - Xn-1) Yn. Includes data for A32 and summary rows for area and volume.

Table with 4 columns: 地番, 測点, Xn, Yn, (Xn+1 - Xn-1) Yn. Includes data for A33 and summary rows for area and volume.

Table with 4 columns: 地番, 測点, Xn, Yn, (Xn+1 - Xn-1) Yn. Includes data for A公園 and summary rows for area and volume.

Table with 4 columns: 地番, 測点, Xn, Yn, (Xn+1 - Xn-1) Yn. Includes data for ゴミ置場 and summary rows for area and volume.

Table with 4 columns: 地番, 測点, Xn, Yn, (Xn+1 - Xn-1) Yn. Includes data for Aその他1 and summary rows for area and volume.

Table with 4 columns: 地番, 測点, Xn, Yn, (Xn+1 - Xn-1) Yn. Includes data for Aその他1 and summary rows for area and volume.

Table with 4 columns: 地番, 測点, Xn, Yn, (Xn+1 - Xn-1) Yn. Includes data for Aその他2 and summary rows for area and volume.

Table with 4 columns: 地番, 測点, Xn, Yn, (Xn+1 - Xn-1) Yn. Includes data for Aその他3 and summary rows for area and volume.

Table with 4 columns: 地番, 測点, Xn, Yn, (Xn+1 - Xn-1) Yn. Includes data for Aその他4 and summary rows for area and volume.

Table with 4 columns: 地番, 測点, Xn, Yn, (Xn+1 - Xn-1) Yn. Includes data for Aその他5 and summary rows for area and volume.

Table with 4 columns: 地番, 測点, Xn, Yn, (Xn+1 - Xn-1) Yn. Includes data for Aその他6 and summary rows for area and volume.

Table with 4 columns: 地番, 測点, Xn, Yn, (Xn+1 - Xn-1) Yn. Includes data for Aその他7 and summary rows for area and volume.

Table with 4 columns: 地番, 測点, Xn, Yn, (Xn+1 - Xn-1) Yn. Includes data for Aその他8 and summary rows for area and volume.

Table with 4 columns: 地番, 測点, Xn, Yn, (Xn+1 - Xn-1) Yn. Includes data for Aその他9(田渡し水路) and summary rows for area and volume.

Table with 4 columns: 地番, 測点, Xn, Yn, (Xn+1 - Xn-1) Yn. Includes data for A開発道路 and summary rows for area and volume.

Table with 4 columns: 地番, 測点, Xn, Yn, (Xn+1 - Xn-1) Yn. Includes data for A開発道路 and summary rows for area and volume.

Form containing metadata: 土地の所在 (高松市小村町字北下所), 縮尺 (1), 測量年月日 (令和 年 月 日), 作製年月日 (令和 8年 2月 13日), 特記事項, 土地の地番 (306-1, 307, 308, 309, 310-3, 349-2, 350-2, 351-6及び地先農道・水路), 図面番号, 作製者 (石井登記測量事務所), 土地家屋調査士 (石井 敦雄), 高松市春日町 1643-9 電話 843-3131